

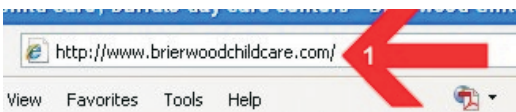
# FAMILY WEB CAM ACCESS

Our complimentary web cam service is available through our website at [www.brierwoodchildcare.com](http://www.brierwoodchildcare.com). We were able to secure the services of Computer Solutions Unlimited to maintain, monitor and support the internet access to the web cams. If you have any problems or need assistance, you can contact them at (716) 873-4225 and identify yourself as a parent from Brierwood.

Note: You must obtain your username and password from the daycare location your child/children attend. These instructions are for Internet Explorer 7.



## Brierwood Daycare Remote Camera Access Instructions When Accessing Cameras For The First Time.

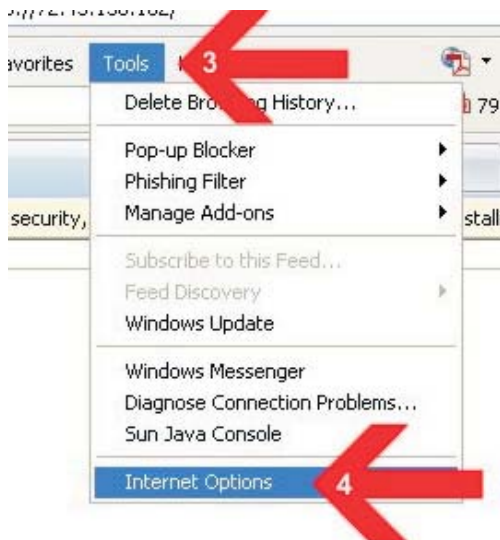


Open Internet Explorer

1. Go to <http://www.brierwoodchildcare.com>



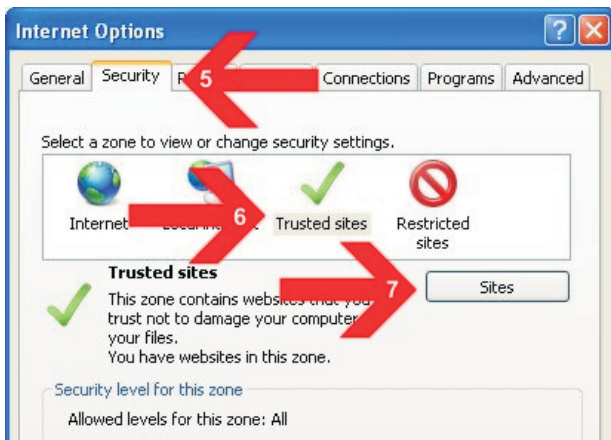
2. Click on the Log-In button for the applicable Brierwood Childcare location



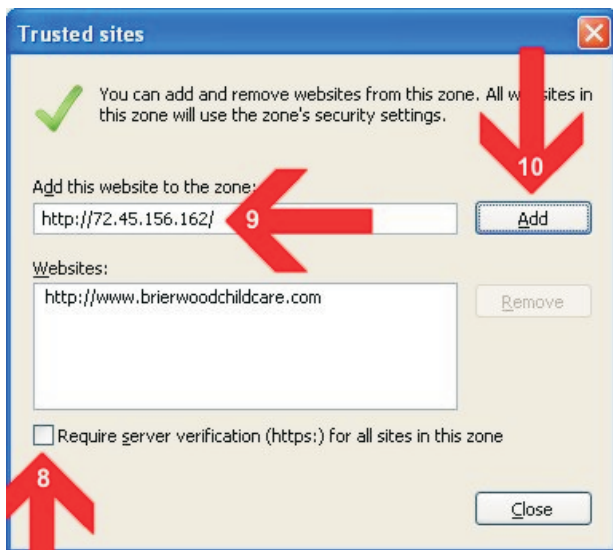
3. In the new window that pops up, a security banner will appear - DO NOT click that at this point.

Instead, click Tools

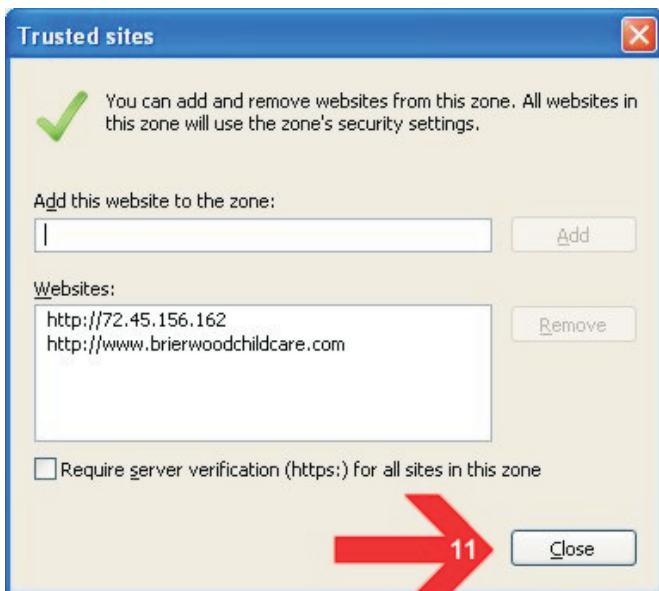
4. Click Internet Options



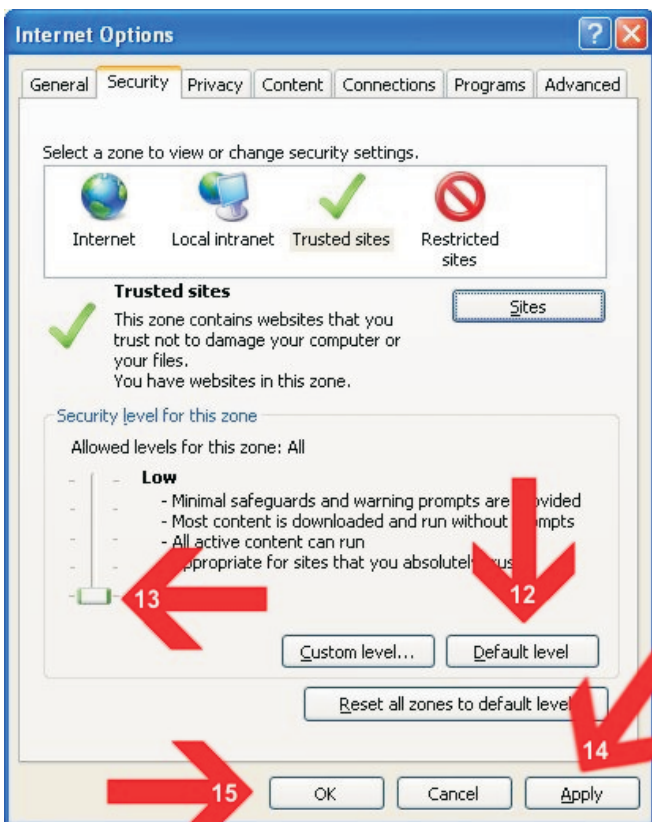
5. Click Security
6. Click Trusted Sites
7. Click Sites button



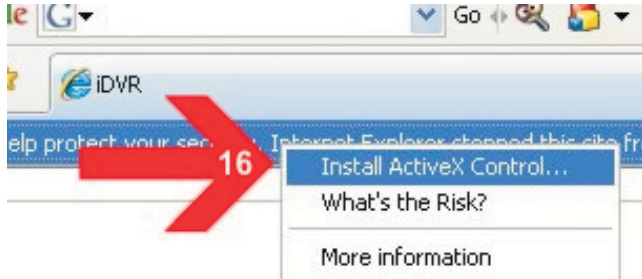
8. Make sure there is NOT a check in the box next to Require server...
9. You will see http:// with numbers in the Add field already
10. Click Add



11. Click Close



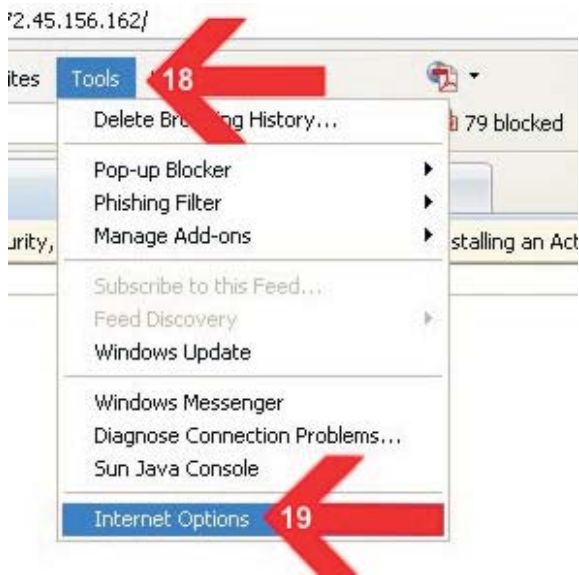
12. Click Default Level
13. Lower the Security Level to Low
14. Click Apply
15. Click OK



16. Click on the security banner and click Install

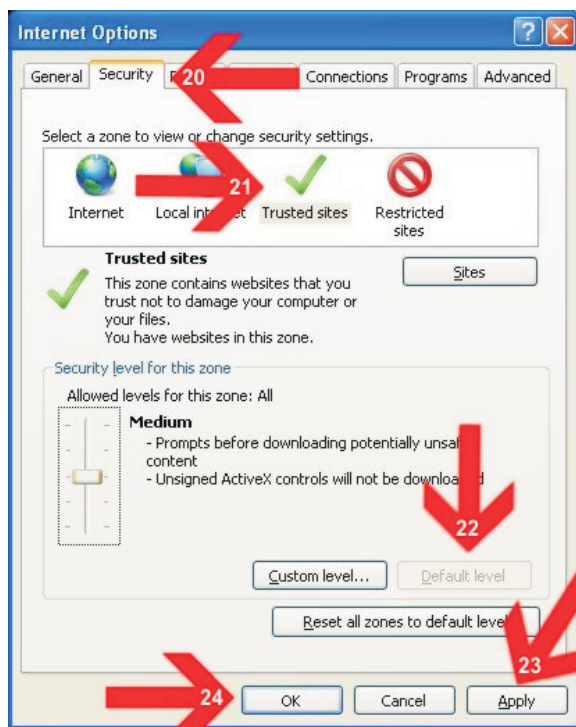


17. Click Install button to install ActiveX Control. This is NOT software. It is an Internet Explorer plugin that helps the video to be displayed. After the first time, this is all you have to do to access the web cams.



18. Click Tools

19. Click Internet Options



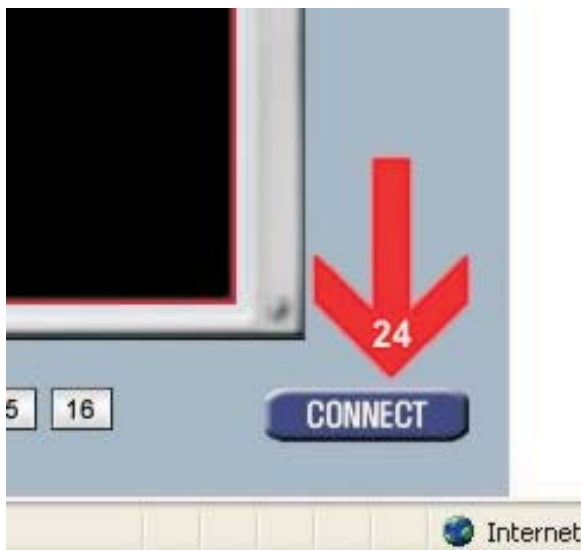
20. Click Security tab

21. Click Trusted Sites

22. Click Default Level and the Security Level will go back to Medium

23. Click Apply

24. Click OK

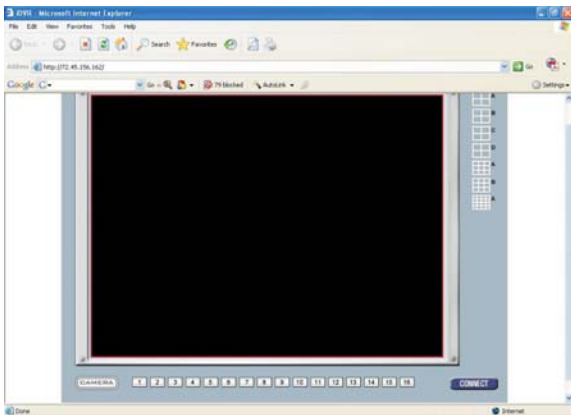


24. Click the Connect button in the lower right hand corner. You may have to click Connect twice.

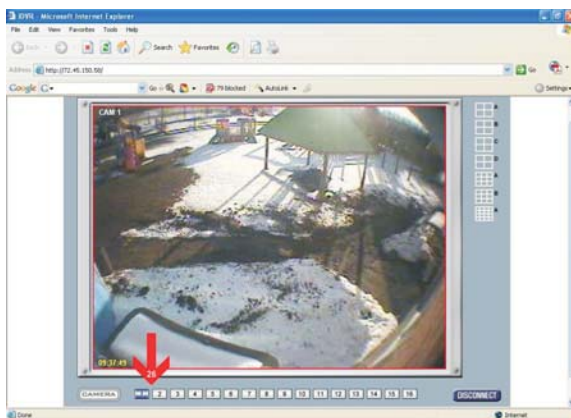


25. Enter your User Name and Password and click OK.

Note: if you don't have your User Name or Password or you cannot login once you get to this point, please call the daycare your child/children attend.



Screen will remain black until you click on camera number. Click on the camera number again to deselect it.



26. Select the cameras you want to view.



27. When you're done, click the Disconnect button in the lower right hand corner. The screen will go black after clicking Disconnect.

Please be advised that the quality of viewing not only depends on the equipment at the Centers, but the equipment you are using to access the site. The newer and faster your equipment, the better quality you will have. Also, be advised that the more users that are on the site at the same time significantly slows down the video output. Please do not log-on to the site and then “minimize” the screen so you can go back and view the Center throughout the day. This slows the video output for everyone else that is logged-on. Please Disconnect each time you wish to use the web cams.

Again, if you have any problems, please contact Computer Solutions Unlimited at (716) 873-4225 and identify yourself as a parent from Brierwood Child Care Centers. We are happy to provide this service to all of our families. We hope you enjoy being able to share in your child's day while you are at work.